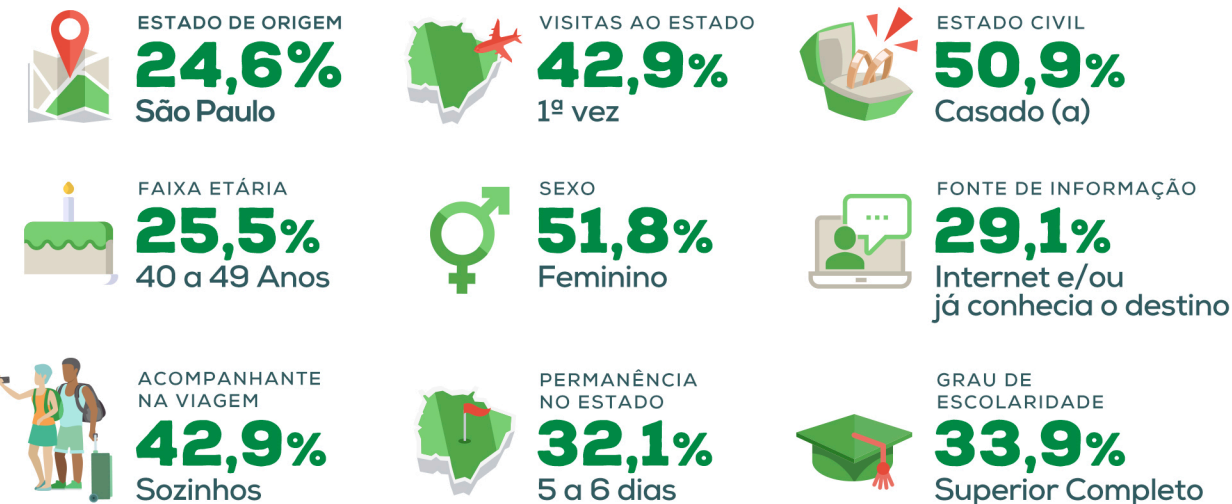
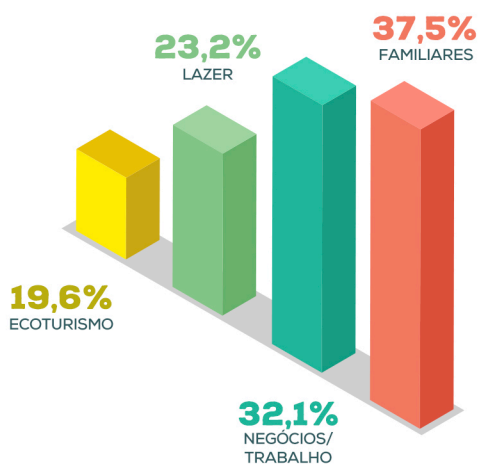


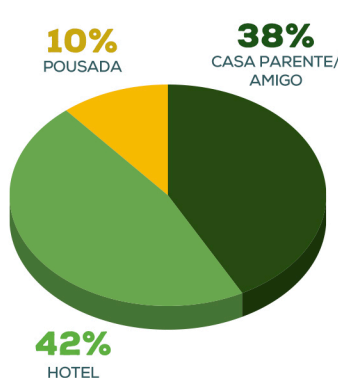
## PRINCIPAIS INFORMAÇÕES



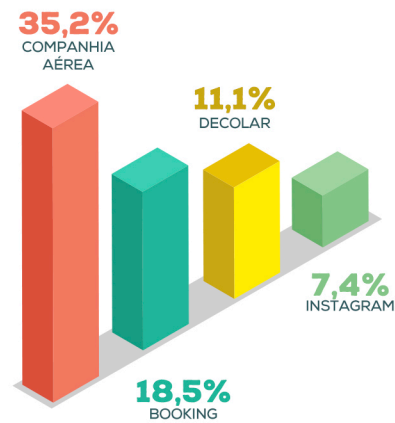
## MOTIVO DA VIAGEM



## HOSPEDAGEM



## SITES/INTERNET



## PRINCIPAIS SERVIÇOS



\*Os dados referem-se à primeira quinzena de março em virtude da pandemia de COVID-19.





## AVALIAÇÃO DOS SERVIÇOS

### Agência de Viagens



**46%**  
ÓTIMO  
**33%**  
BOM  
**21%**  
REGULAR  
**0%**  
RUIIM  
**0%**  
PÉSSIMO

### Atrativos Turísticos



**56%**  
ÓTIMO  
**33%**  
BOM  
**11%**  
REGULAR  
**0%**  
RUIIM  
**0%**  
PÉSSIMO

### Bares e Restaurantes



**35%**  
ÓTIMO  
**37%**  
BOM  
**24%**  
REGULAR  
**4%**  
RUIIM  
**0%**  
PÉSSIMO

### Casa de Câmbio



**50%**  
ÓTIMO  
**13%**  
BOM  
**13%**  
REGULAR  
**13%**  
RUIIM  
**13%**  
PÉSSIMO

### Comércio



**33%**  
ÓTIMO  
**39%**  
BOM  
**12%**  
REGULAR  
**9%**  
RUIIM  
**6%**  
PÉSSIMO

### Gastronomia



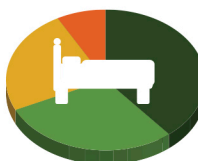
**30%**  
ÓTIMO  
**38%**  
BOM  
**30%**  
REGULAR  
**2%**  
RUIIM  
**0%**  
PÉSSIMO

### Guia de Turismo



**55%**  
ÓTIMO  
**18%**  
BOM  
**27%**  
REGULAR  
**0%**  
RUIIM  
**0%**  
PÉSSIMO

### Hospedagem



**39%**  
ÓTIMO  
**29%**  
BOM  
**24%**  
REGULAR  
**8%**  
RUIIM  
**0%**  
PÉSSIMO

### Locadora de Veículos



**43%**  
ÓTIMO  
**38%**  
BOM  
**14%**  
REGULAR  
**0%**  
RUIIM  
**5%**  
PÉSSIMO

### Taxi / Uber / 99



**57%**  
ÓTIMO  
**27%**  
BOM  
**3%**  
REGULAR  
**13%**  
RUIIM  
**0%**  
PÉSSIMO

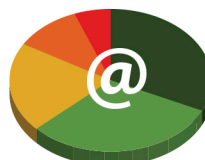
### Vida Noturna



**25%**  
ÓTIMO  
**53%**  
BOM  
**3%**  
REGULAR  
**6%**  
RUIIM  
**13%**  
PÉSSIMO

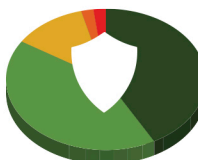
## INFRAESTRUTURA TURÍSTICA

### Acesso Internet



**33%**  
ÓTIMO  
**27%**  
BOM  
**18%**  
REGULAR  
**16%**  
RUIIM  
**7%**  
PÉSSIMO

### Segurança Pública



**42%**  
ÓTIMO  
**42%**  
BOM  
**12%**  
REGULAR  
**2%**  
RUIIM  
**2%**  
PÉSSIMO

### Sinalização Turística



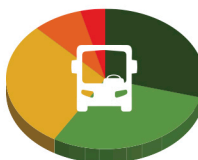
**20%**  
ÓTIMO  
**37%**  
BOM  
**24%**  
REGULAR  
**12%**  
RUIIM  
**7%**  
PÉSSIMO

### Telefonia Móvel



**30%**  
ÓTIMO  
**32%**  
BOM  
**21%**  
REGULAR  
**11%**  
RUIIM  
**6%**  
PÉSSIMO

### Transporte



**29%**  
ÓTIMO  
**29%**  
BOM  
**29%**  
REGULAR  
**8%**  
RUIIM  
**4%**  
PÉSSIMO

### Vias e Rodovias



**32%**  
ÓTIMO  
**26%**  
BOM  
**26%**  
REGULAR  
**11%**  
RUIIM  
**6%**  
PÉSSIMO